

THE BASE: LOCATION

What can I do to secure a booking?

If you've never been to The Base, and you'd like to visit before you book, we'll be delighted to show you around.



Along with fantastic facilities, the Virgin Atlantic training team can also provide excellent training packages. We offer a wide range of programmes from aviation specific engineering to accredited management development and customer service programmes.

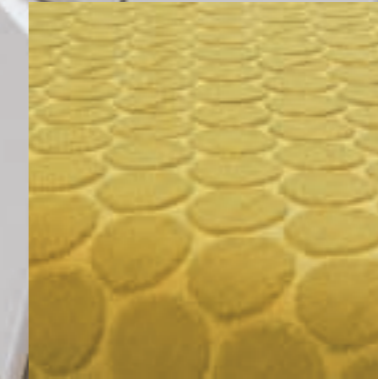
To find out more please visit our website www.virginatlantic.com/training or contact the team on training@fly.virgin.com or 01293 747395.

We look forward to hearing from you.

For further information on facilities or booking requirements, contact:

Events Team
Virgin Atlantic Airways
The Base
Fleming Way, Crawley
West Sussex, RH10 9LX

Tel: 01293 747285
Fax: 01293 448176
Email: event.team@fly.virgin.com



The BASE

Team training facilities Virgin Atlantic style



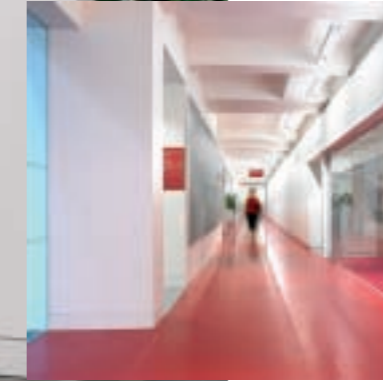
Printed on paper from recycled and well managed forests





a venue with a difference

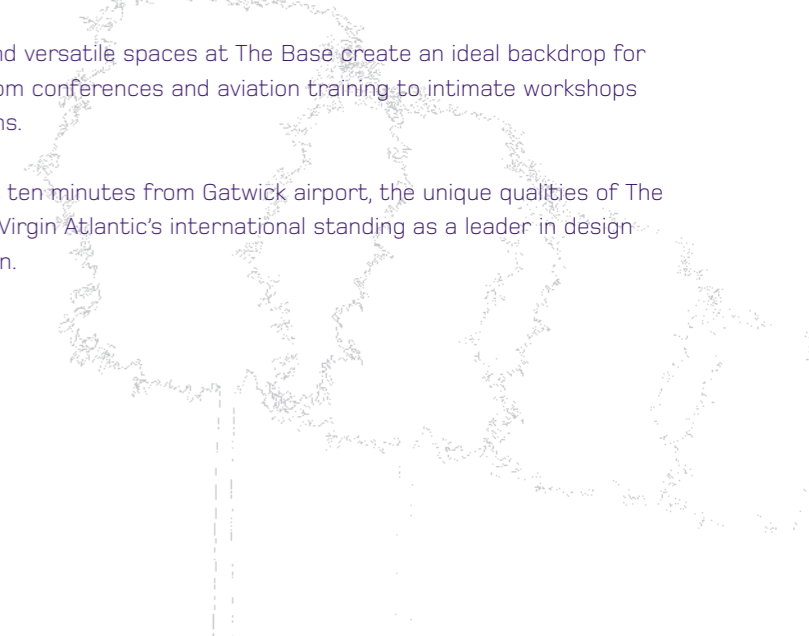
THE BASE: INTRODUCTION



The Base is a spectacular, modern and inspiring environment for all types and sizes of corporate functions. A state of the art airline training facility, The Base opened in May 2007 and is an elegant and contemporary venue in which to meet and exceed your client's expectations.

The stylish and versatile spaces at The Base create an ideal backdrop for any event; from conferences and aviation training to intimate workshops and receptions.

Situated just ten minutes from Gatwick airport, the unique qualities of The Base reflect Virgin Atlantic's international standing as a leader in design and innovation.





cutting edge technology

THE BASE: PRESENTATIONS

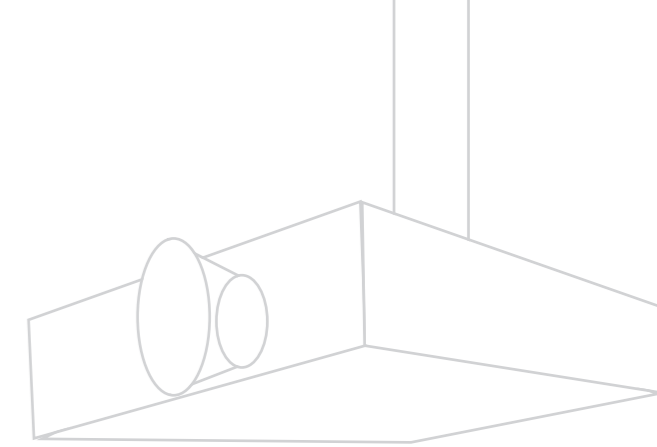
Auditorium

Our impressive and dynamic auditorium is a customised events space with sensational facilities.

A light and stimulating environment, the auditorium benefits from seating for 200 guests, ultra-modern AV technology and a private entrance, as well as Japanese inspired break-out spaces, making it the perfect setting for conferences, creativity sessions, ceremonies and presentations.

Key Features:

- Spacious seating for up to 200 guests theatre style and 100 cabaret style.
- A touch lectern where speakers can control the auditorium environment
- 8m x 6m front projection panel which can be used as an interactive surface
- A state of the art control and mixing room





flexible learning spaces

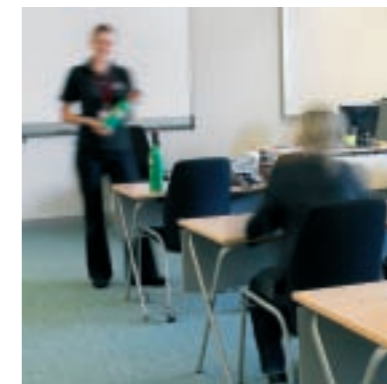
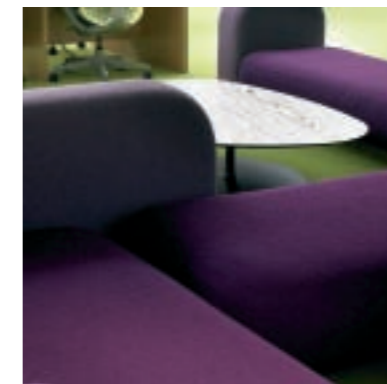
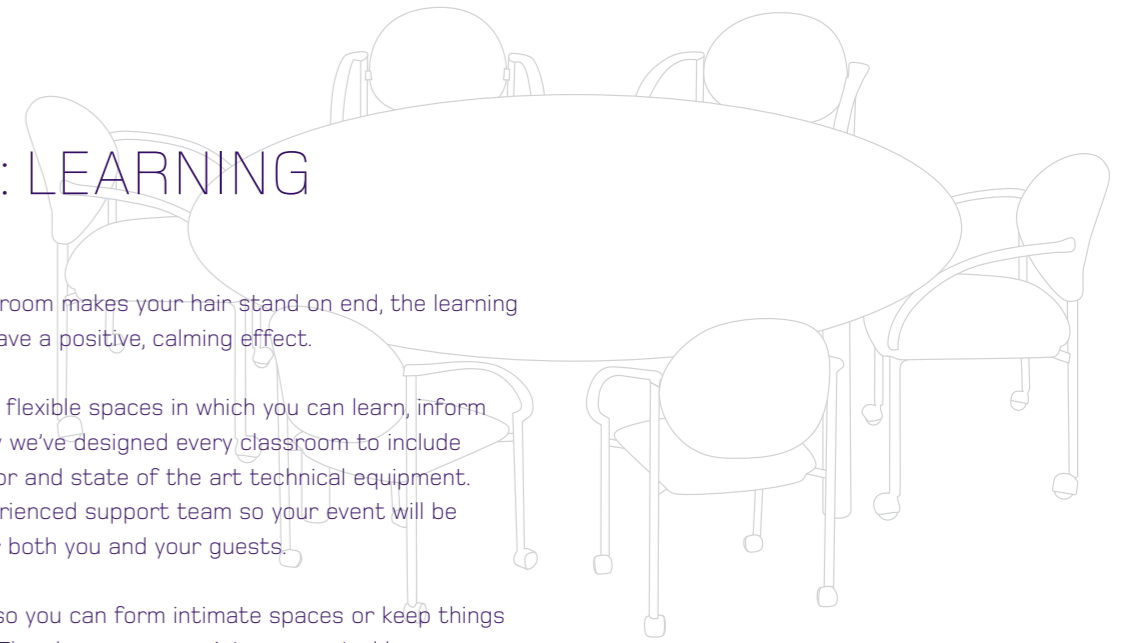
THE BASE: LEARNING

Classrooms

If the whole idea of a classroom makes your hair stand on end, the learning facilities at The Base will have a positive, calming effect.

We like to think of them as flexible spaces in which you can learn, inform and explore. And that's why we've designed every classroom to include mood lighting, positive decor and state of the art technical equipment. We'll even throw in an experienced support team so your event will be seamless and enjoyable for both you and your guests.

Each classroom is flexible so you can form intimate spaces or keep things in a more traditional style. The classrooms are interconnected by a courtyard of serene and light break-out areas for people who need to take a moment and gather their thoughts.





catering for your needs

THE BASE: HOSPITALITY



Centrally located in the Town Square, our coffee bar has a great selection of beverages and snacks to suit everyone.

Alternatively, our comfortable restaurant offers a full menu, with tempting meal choices and daily specials.

All weekday catering is organised via a voucher system, and our catering team will be happy to discuss any special requests you may have.

A full range of banqueting menus and wines for weekend or evening events are available on request.





THE BASE: SIMULATION



Rigs Hall

If you're looking to deliver professional safety, security, aviation medical, customer service or cabin service training, look no further than our Rigs Hall.

An impressive glass atrium at the heart of The Base, Rigs Hall offers state of the art technology and a unique and contemporary learning space.

Facilities include cabin service, safety, medical and aviation training rigs, aircraft door trainers, a slide and a liferaft.

The most realistic airline training environment in the UK, Rigs Hall is the ideal location for all your teambuilding, airline and customer service training.

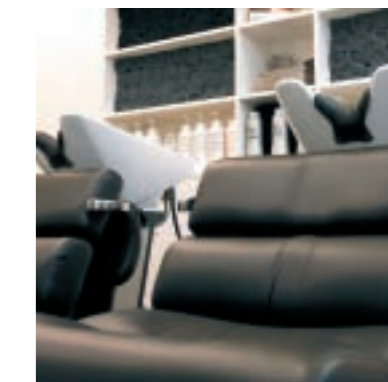


leading aviation training



professional treatment rooms

THE BASE: BEAUTY



At Virgin Atlantic, we know beauty is more than skin deep, and our pioneering beauty training facility is the place to learn how to pamper. The luxurious therapy training room caters for up to eight trainees. With the latest professional equipment including showers, nail stations, and steamers, it's the ideal space for teaching all aspects of beauty theory, make-up and body wrap techniques.

If sheer elegance is your priority, our hairdressing, barbering and shaving room really is the main event. Suitable for four trainees, this dedicated room can be customised to suit your needs. Products from Wella, Sebastian and Philip Kingsley are available.

So you can provide holistic and professional training in an inspiring environment, we also offer a modern teaching space for up to 20 people.

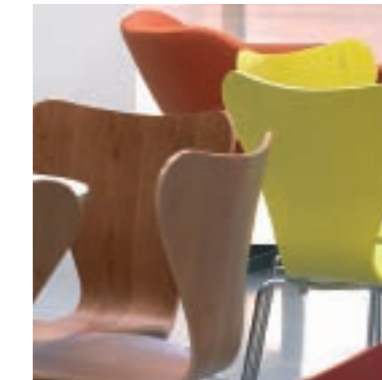
With your expertise and our dedicated facilities, your trainees will soon be on their way to the body beautiful.





see you soon

THE BASE: BOOKING



Room Hire Price Tariff

Our auditorium and training rooms can be hired for full or half days. They are also available in the evenings and at weekends. Further details and rates on request.

All our room hire rates include complimentary use of in-room audio/visual equipment*.

With a range of room sizes and configurations as well as a dedicated and experienced support team, you can be confident all the essentials are in place to make your event or training experience a success.

* Please note: The Base is unable to provide laptops or PCs, so visitors are advised to bring their own. Unfortunately we cannot offer technical support for your own equipment. We also advise that you visit in advance to check your laptop's compatibility with our equipment and also our wireless network.

